

MONTHLY MEMBERSHIP PROGRESS REPORT

District 11 A1

Results as of: 5/31/2020

GMT:

LOCATION MICHIGAN

GMT CA

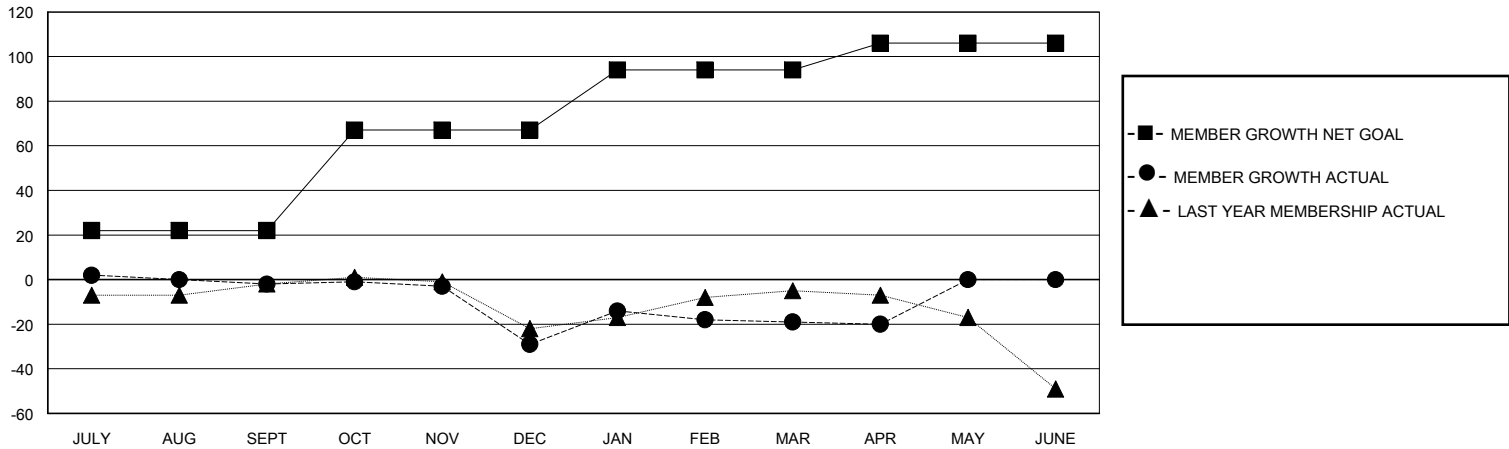
Clubs			
RESULTS FOR 2019-2020			
QUARTER	NEW CLUB GOAL	NEW CLUBS	DROPPED CLUBS
JULY/AUG/SEPT	0	0	0
OCT/NOV/DEC	1	0	1
JAN/FEB/MAR	0	0	0
APR/MAY/JUNE	0	0	0

Members			
RESULTS FOR 2019-2020			
QUARTER	MEMBER GROWTH NET GOAL	MEMBER GROWTH ACTUAL	DROPPED MEMBERS ACTUAL (including transfers)
JULY/AUG/SEPT	22	21	14
OCT/NOV/DEC	45	15	40
JAN/FEB/MAR	27	39	14
APR/MAY/JUNE	12	2	3

GOALS AND ACTUAL NEW CLUBS CUMULATIVE



GOALS AND ACTUAL MEMBERS CUMULATIVE



DROPPED CLUBS: 1

20 CLUBS OF 35 ADDED 1 OR MORE NEW MEMBERS

GENDER DISTRIBUTION

MALE 486 (63.20%)
FEMALE 283 (36.80%)

DROPPED MEMBERS

DECEASED	8
CLUB CANCELLED	22
OTHER	40
TOTAL	70

[CLICK HERE FOR CUMULATIVE MEMBERSHIP DATA](#)

TOTAL FAMILY UNIT MEMBERS	163
FAMILY MEMBERS PAYING HALF DUES	86